

# R-CAM 1300 XLT DOWNHOLE CAMERA SYSTEM

## With Adjustable Lighting & Hard Drive Storage

### DESCRIPTION

The Laval *R-Cam 1300 XLT* downhole camera is a completely portable, self-contained video inspection dual view camera system that can inspect boreholes up to 396.2m (1300 ft.) deep and 30.5cm (1.64 ft.) in diameter. **The *R-Cam 1300 XLT* camera has the ability to increase and decrease the cameras lighting on demand.**

The *R-Cam 1300 XLT* system combines all the features of a full, professional system with breakthrough affordability. Developed as a cost-effective portable system, it delivers real-time inspection footage on-site. Using the *R-Cam 1300 XLT* allows operators to offer an enhanced and quality service by giving clients the opportunity to view well conditions and approve completed works, a must for drillers & rehabilitation engineers.

This lightweight, professional grade camera comes with its own trolley Features include down and side viewing capability, an on-screen depth counter, 9" DVR Monitor, 16GB of internal/external storage, 12v power supply and a portable battery.

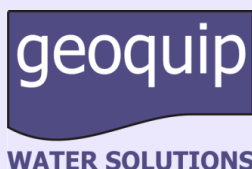
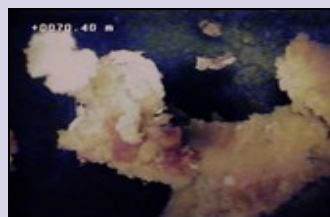
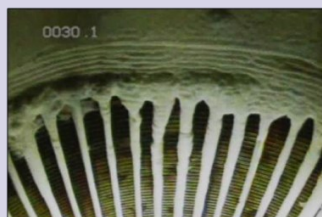
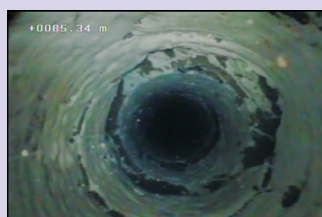


### TECHNICAL CHARACTERISTICS

- Diameter: 2 inches (5.1 cm) O.D, Overall Camera Length: 20 inches (50.8 cm)
- Housing: Stainless steel
- Cable: 1,300 feet (396.2 m) Kevlar-reinforced, small diameter coaxial cable. Single conductor electronic technology.
- Lens: BK-7 glass
- Power Supply: Portable 12VDC battery pack and charger. Rechargeable by local current (please specify at time of order).
- Total Camera Weight: 18 lbs (8.2 kg)
- Pressure Rating: Pressure tested and waterproof to 750 p.s.i.
- Scanning System: Camera Modules greater than or equal to 540 TVL for NTSC & PAL
- Operating Temperature: 32° to 122° F (0° to 50° C)
- Recorder: Flash based hard drive with 16GB of internal storage and 16GB of external USB storage. Survey footage is exported natively in a single .mp4 format file
- LED Lighting: High intensity, long life, shock proof LED lighting, side view and forward view with 5 adjustable brightness settings.
- Depth Counter: On-screen depth display with calibration measured in feet and tenths, or meters.
- Monitor: 9" LCD colour DVR monitor with playback feature & image capture, also includes Mini Bluetooth Keyboard remote (qwerty)
- Winch, Reel, Motor, and Cart: 12VDC electric powered, variable speed reel for raising and lowering the camera in a well. All parts are mounted on a small, two-wheeled cart with an extendable 36-inch boom.



**Down and side view high quality videos for optimal viewing**



Improve your performance and quality  
 Real-time inspection footage on-site  
 'R-CAM Underwater Vision'

**geoquip water solutions limited**  
 Unit 7, Sovereign Centre  
 Farthing Road Industrial Estate  
 Ipswich, IP1 5AP, ENGLAND  
**TEL: + 44 (0) 1473 462046**  
**FAX: + 44 (0) 1473 462146**  
[www.geoquipwatersolutions.com](http://www.geoquipwatersolutions.com)

# R-CAM 1300 XLT DOWNHOLE CAMERA SYSTEM

## With Adjustable Lighting & Hard Drive Storage

### **NEW** R-CAM 1300 XLT FEATURES

- State-of the art solid state DVR that records survey footage to 16GB of internal storage and/or expandable USB flash drive
- Mini Bluetooth Keyboard remote (qwerty)
- Survey footage is exported natively in a single .mp4 format file
- DVR recording and playback feature, image capture
- Add text details at the start of your survey
- Built in microphone recorder, so you can add voiceover at touch of a button
- Five stages of adjustable lighting



### KEY FEATURES OF R-CAM 1300 XLT

#### Portable Camera Control Unit

Compact package with hard case and locking mechanism for the monitor and all control functions

#### Video/Recording Monitor

9" LCD colour DVR monitor with record and playback feature, records to USB and/or internal 16GB storage

#### Transport cart

Custom two wheeled unit for ultimate mobility

#### Powered reel

Adjustable speed powered winch with 396.2 m (1,300 ft.) of Kevlar reinforced coaxial cable

#### High Intensity Lighting/Dual Camera System

**50 super bright, water-clear LEDs with five stages of adjustable lighting which allows high resolution videos in wells up to 30.5cm in diameter.**

Dual wide angle cameras, one down view, one side view, with remote switching and continuous 360° rotation.

#### Portable Power Supply

12v Battery with charger and digital volt meter



Available accessories: Flight Cases, One touch recorder, Lens shield & deflector & cable head repair kits



View the R-CAM 1300 in action, visit our YouTube Channel;

[www.youtube.com/user/geoquipwater](http://www.youtube.com/user/geoquipwater)

**geoquip water solutions limited**

Unit 7, Sovereign Centre  
Farthing Road Industrial Estate  
Ipswich, IP1 5AP, ENGLAND

TEL: + 44 (0) 1473 462046

FAX: + 44 (0) 1473 462146

[www.geoquipwatersolutions.com](http://www.geoquipwatersolutions.com)